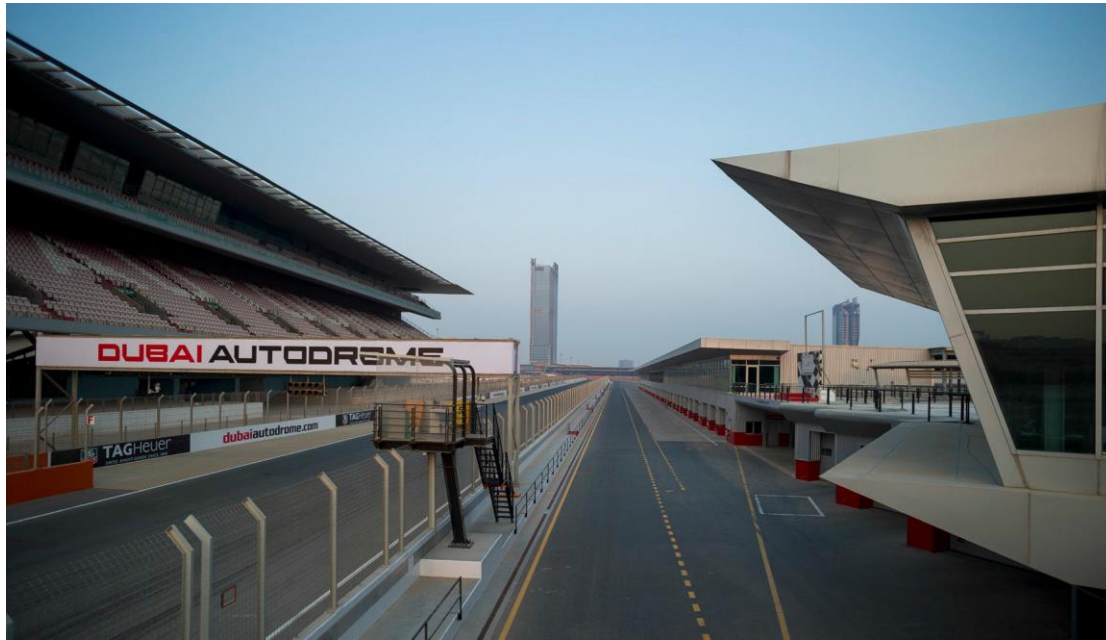


# DUBAI AUTODROME

Indoor and Outdoor Event's Arena's



# OVERVIEW

---

## Host Your Event In Winning Style

Dubai Autodrome's 620310 sqmt facility has a multitude of indoor and outdoor **Events Arena's** that are ideal for intimate or high capacity crowds.

Whether for corporate events, kids parties or product launch's that requiring spacious areas with catering kitchen's and impressive views or larger areas for concerts, exhibitions or Ramadan tents. There are several **Events Arenas** to choose from to best accommodate your guests or clients.



All of these areas (and even parts of the race track) are available for branding, allowing customisation of the facilities for bespoke events. Whether a conference, product launch, customer day or a thank you to your colleagues, Dubai Autodrome offers an ideal environment for you and your guests.

## Document Contents

- 12 Hospitality Suites - 3,840 m<sup>2</sup>
- Race Paddock - 14,000 m<sup>2</sup>
- 12 Indoor pit garages of - 415 m<sup>2</sup> each
- Hill Circuit
- Grandstand Courtyard -
- Grandstand Deck
- Amphitheatre
- Indoor Kartdrome

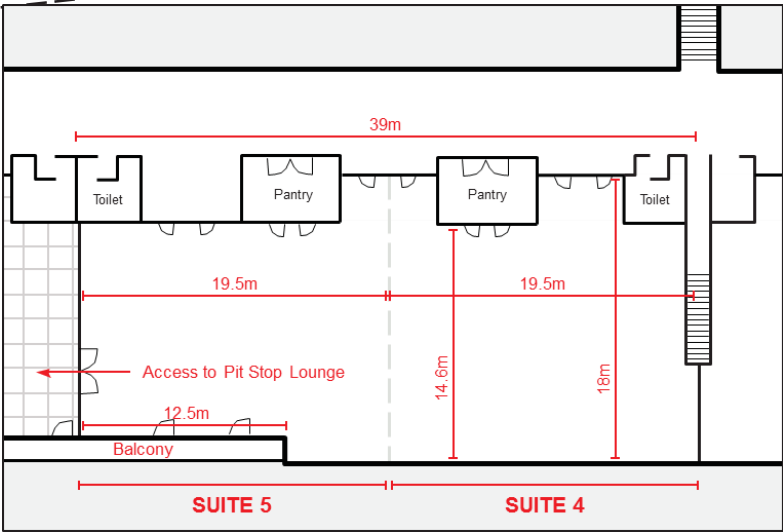
# SUITES OVERVIEW



- Rooms can be partitioned
- Each suite has its own kitchen prep area
- Terraced suites available
- 1 Existing furnished suite available (Suite 8)
- 5 Star Catering available
- Easy access from parking area
- Branding opportunities
- PA System with speakers available

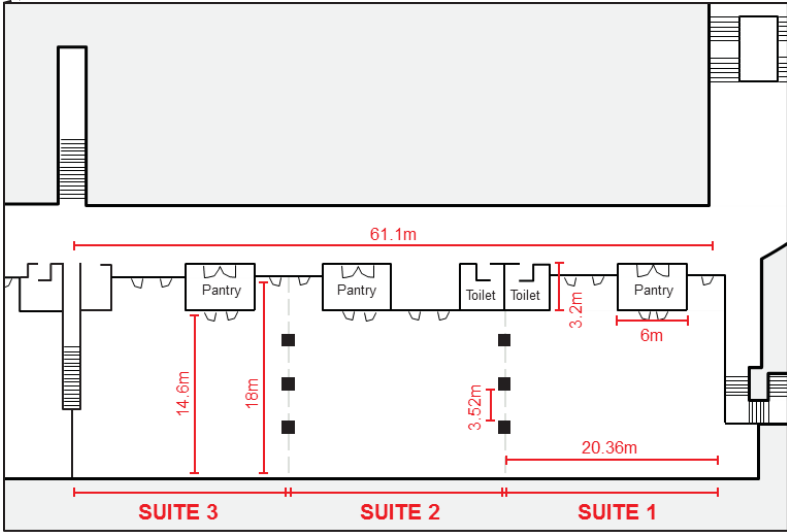


# UNFURNISHED SUITE SPECIFICATIONS



SUITES 4-5

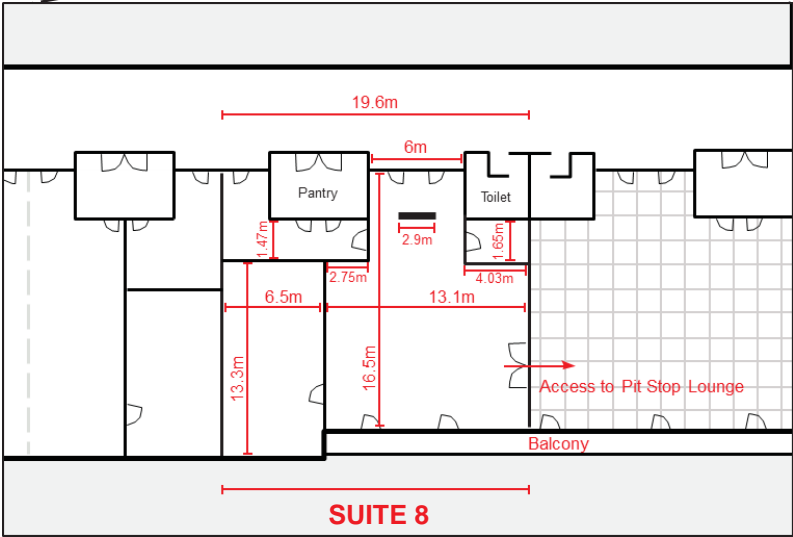
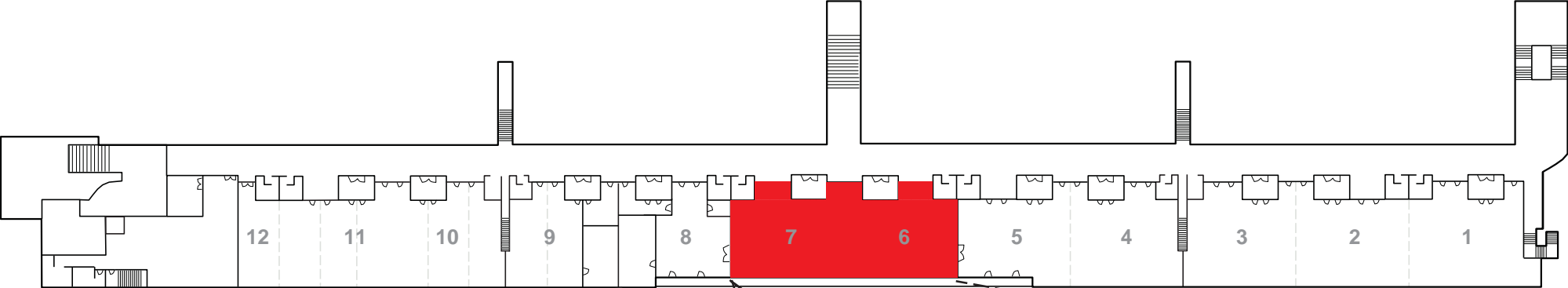
Length: 39m      Width: 18m  
Total Area: 702sqm      Ceiling Height: 3m



SUITES 1-2-3

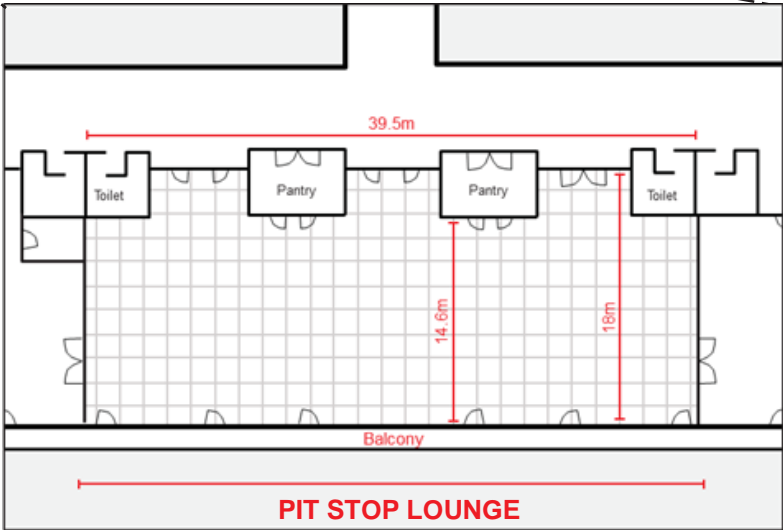
Length: 61.1m      Width: 18m  
Total Area: 1,099sqm      Ceiling Height: 3m

# FURNISHED SUITE SPECIFICATIONS



**SUITES 8 Fully Furnished**

Length: 19.6m      Width: 16.5m  
Total Area: 323sqm      Ceiling Height: 3m

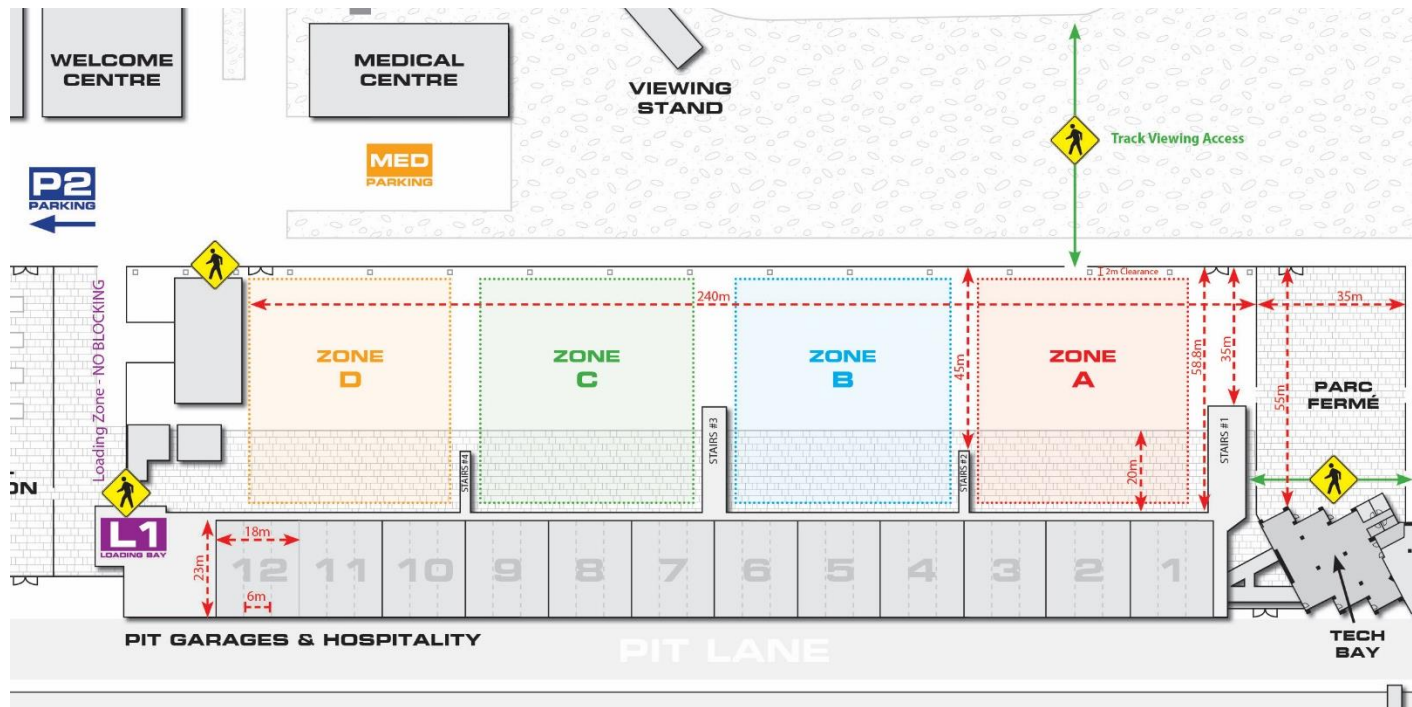


**SUITES 6-7 Partially Furnished**

Length: 39.5m      Width: 18m  
Total Area: 711sqm      Ceiling Height: 3m



# RACE PADDOCK SPECIFICATIONS



## PADDOCK SPECS

- Length: 240m
- Width: 58m
- Total Area: 13,920 sqm



# PIT GARAGE SPECIFICATIONS



## GARAGE SPECS

- 23m x 18m each garage
- 23m x 6m each bay
- 3 bays in each garage
- Ceiling height: 3m
- Power: Single & 3-Phase

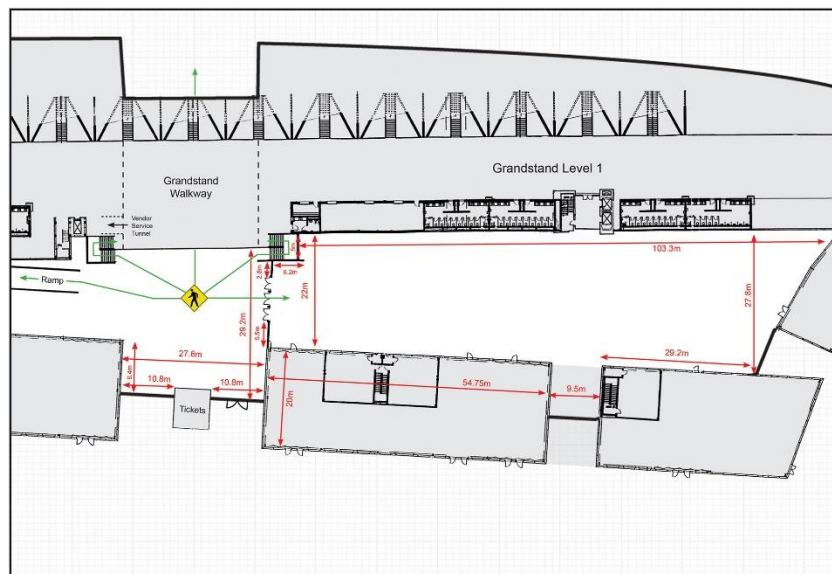
### Doors size:

- -Height: 3 meters
- -Width: 4,77 meters





# GRANDSTAND COURTYARD



## COURTYARD SPECS

- Length: 103m
- Width: 25m
- Total Area: 2575sqm
- Fully interlocked
- Power and water supply
- Easy access from main street
- Parking for 80 cars





# GRANDSTAND DECK



## GRANDSTAND DECK SPECS

- Length: 57.25m      Width: 15.25m
- Total Area: 873sqm      Ceiling Height: 2.2 – 2.8m



# INDOOR KARTDROME ARENA



## INDOOR KARTDROME SPECS

- Length: 109m
- Width: 42m
- Total Area: 4,578 sqm
- Ceiling Height: 9m
- Floor lighting
- Sound system throughout
- Multiple WC





# HILL ARENA

## HILL INFO

- Ideal for concerts and outdoor exhibitions
- Optional access to off road circuit



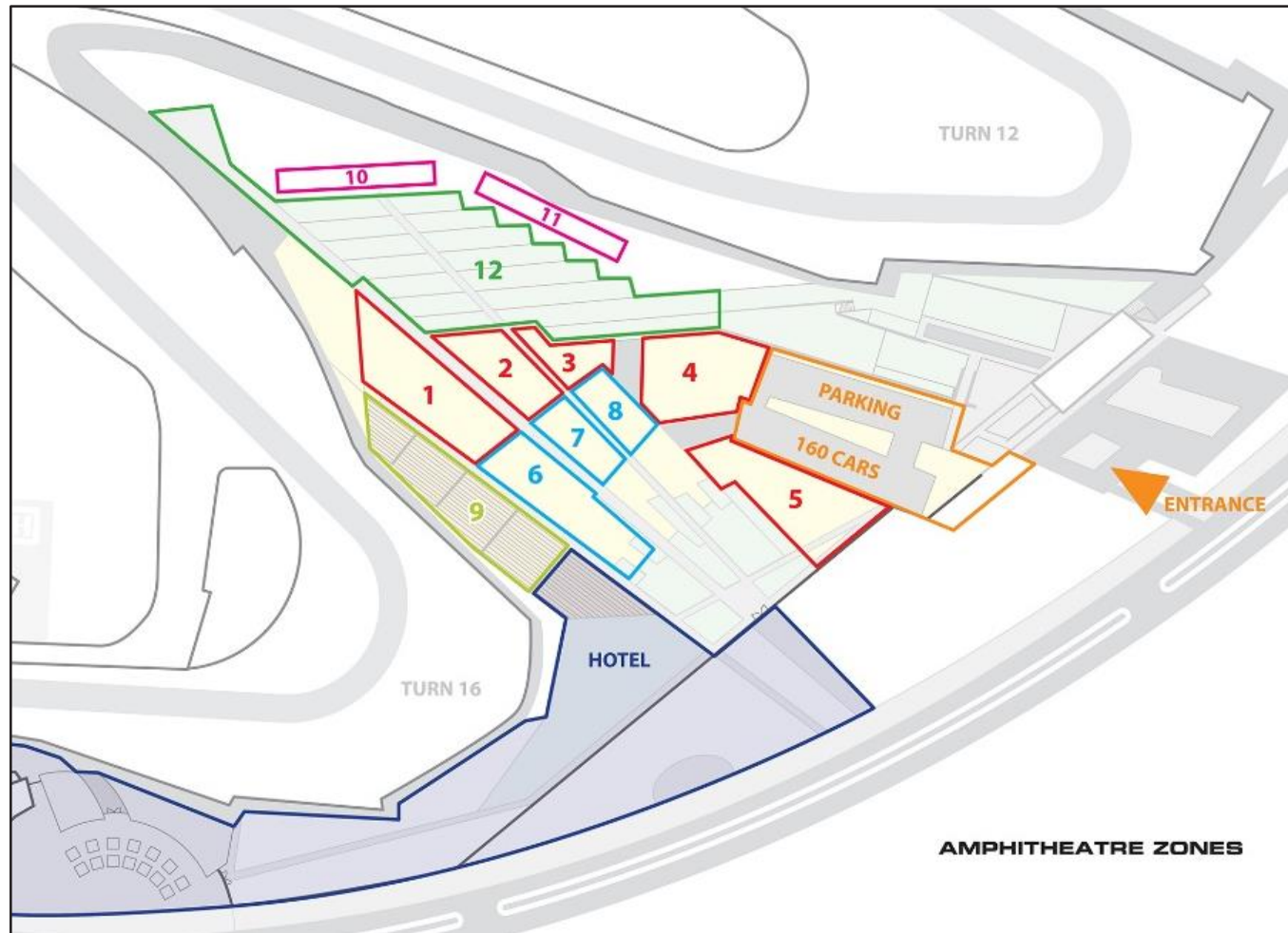


# AMPHITHEATER ARENA (Available post summer 2017)

---



# AMPHITHEATER SPECIFICATIONS



## ZONE SIZES

- 1 – 2,941 sqm
  - 2 – 1,423 sqm
  - 3 – 810 sqm
  - 4 – 2,585 sqm
  - 5 – 2,759 sqm
  - 6 – 2,336 sqm
  - 7 – 920 sqm
  - 8 – 880 sqm
  - 9 – 9,694 sqm
  - 10 – 943 sqm
  - 11 – 940 sqm
  - 12 – 10,894 sqm
- Total – 51,155 sqm